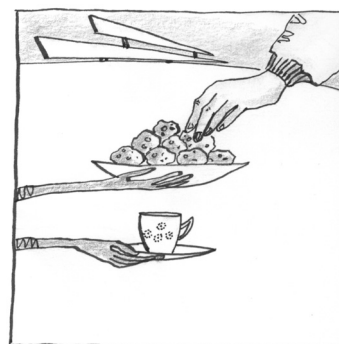
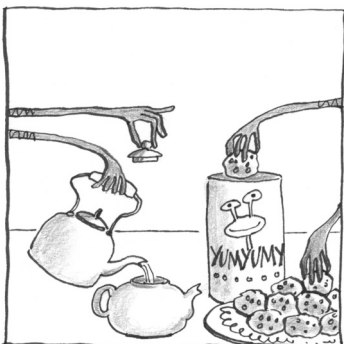
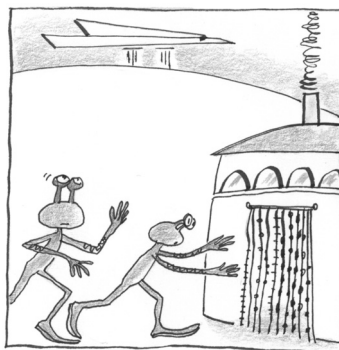
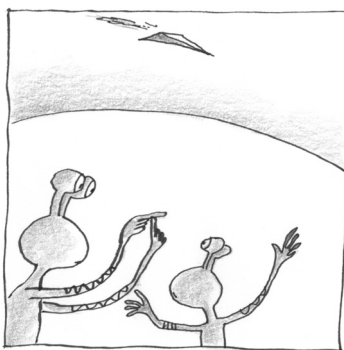
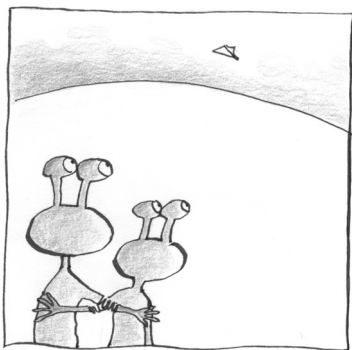


# Settings

7





Taylor & Francis

Taylor & Francis Group

<http://taylorandfrancis.com>

# Settings

Look through this section and talk with your group about the different **Settings**. How many of them are familiar to you? How many are unfamiliar?

## Describing settings

### *Writer's Tips*

- 1 Use your senses when planning to write a description for a **setting**. Create a senses plan to help you. Think of words you could use to describe the sights, sounds and smells in your **settings**. Think about how things in your **setting** might feel to touch.

**Sight    Sound    Smell    Touch**

You could choose a **setting** that you know really well. Two examples have been done for you using a **senses** plan. One is about a jungle on page 83 and the other is about a cave on page 84.

- 2 Now look at the example of the island on page 85 and complete the sentences beneath the senses plan, choosing words from the plan.
- 3 Finally fill in the senses plans for the castle setting and the graveyard setting and try to write setting descriptions using the describing words you have chosen.

You could make your own plans for all of these examples, and write your own descriptions.

## A good idea!

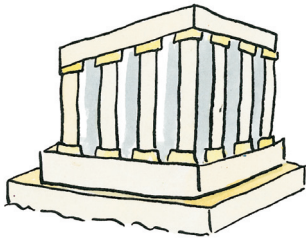
If you have started to write a story in a certain **setting**, have a look at other sections of *The Story Maker*. These sections will give you ideas and help you with your story.

Describing the **weather** conditions and what **time** of day it might be can make your story come alive.

Reading descriptions of settings in books will give you ideas and inspiration for your own stories.

# Settings

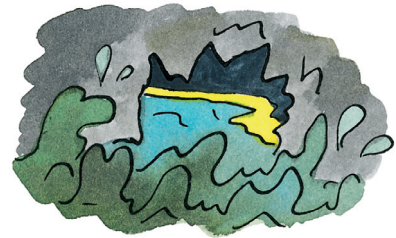
There are many types of settings:



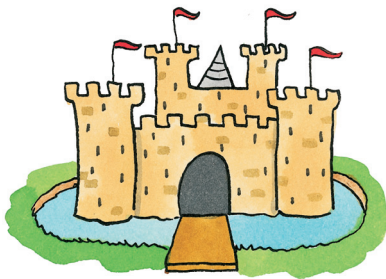
Ruin: temple



Garden: secret garden



Cave



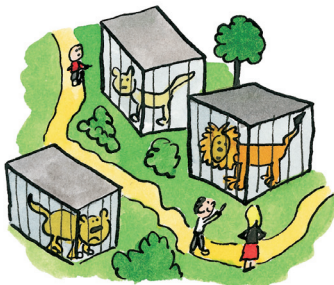
Castle



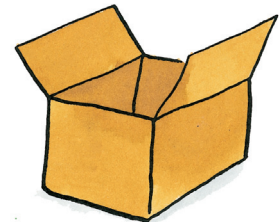
Ark



Apartment: flat



Zoo



Box

# Settings

There are many types of settings:



Palace



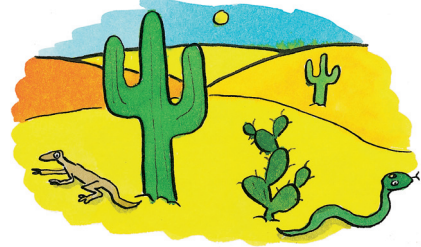
Graveyard



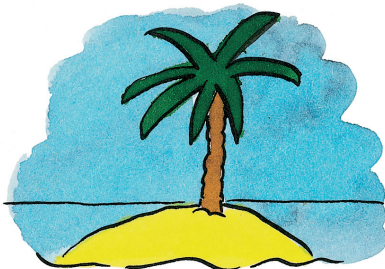
Planet



Haunted house



Desert



Island



Galleon



Jungle

Can you think of any other settings  
you could use in your story?

# Describing settings

It is a good idea to use your senses to describe your setting:

SIGHT TOUCH SOUND SMELL

Here is an example of a senses plan:

|   |  |   |
|---|--|---|
| <p><b>Sight</b><br/>Dense undergrowth<br/>Emerald glow</p>  |  | <p><b>Sound</b><br/>Monkey calls<br/>Shrieks<br/>Crackling twigs</p>          |
| <p><b>Smell</b><br/>Earthy<br/>Damp<br/>Rotting animals</p> | <p><b>Jungle</b></p>   | <p><b>Touch</b><br/>Velvet leaves<br/>Sticky cobwebs<br/>Scratching twigs</p> |

Use words from your senses plan to create a setting.

The jungle was **a mass of dense, dark undergrowth** overhung by **towering trees**.

We could hear **monkey calls** echoing over our heads.

Our nostrils were filled with a mixture of the **rotting animals** and **damp, earthy** ferns.

Our faces were constantly wrapped in **sticky cobwebs** which we hastily wiped away.

# Describing settings

Here is an example of a senses plan:

|  |  |   |
|--|--|---|
| <p><b>Sight</b><br/>Dark<br/>Shady</p>   |  | <p><b>Sound</b><br/>Echoing<br/>Hollow<br/>Dripping</p> |
| <p><b>Smell</b><br/>Dank<br/>Seaweed</p> | <p><b>Cave</b></p>   | <p><b>Touch</b><br/>Slimy<br/>Icy<br/>Craggy</p>        |

Use words from your senses plan to create a setting:

I followed the mermaid into a **dark** cave.

The rocks were **slimy** under my feet, and there was a strong smell of **seaweed**.

As she turned to speak, her voice **echoed** around the walls of the cave.



# Describing settings

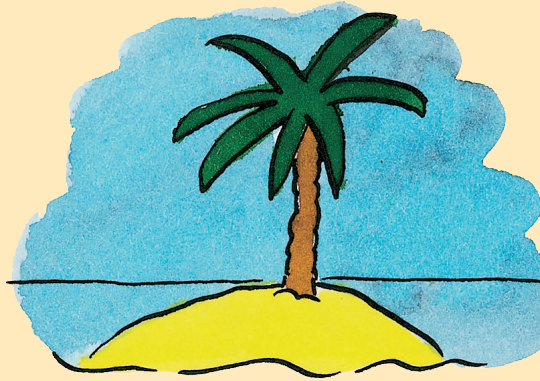
Here is an example of a senses plan:

## Sight

Deserted  
Remote  
Shady  
Lush

## Smell

Fresh sea air  
Seaweed  
Spice



Island

## Sound

Lapping waves  
Gentle breeze  
Seagull's cries

## Touch

Gritty  
Dry

Choose some words to complete the sentences using one word from each sense:

We swam over to the island. It was ...

The sand felt ...

All around us we could hear the sound of ...

The smell of ... was heavy in the air.

# Describing settings

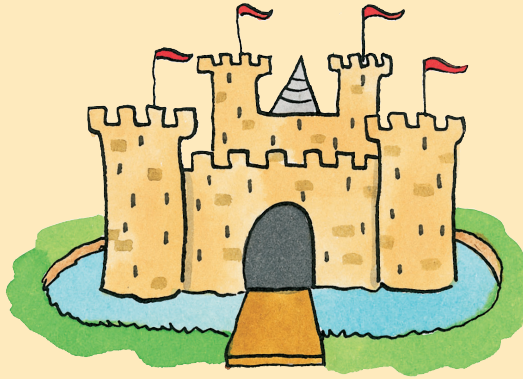
Use your senses to describe the castle and create a plan.

Sight

Sound

Smell

Touch



Castle

Use words from your plan to write a setting description of the castle.

Use your senses to describe the graveyard and create a plan.

Sight

Sound

Smell

Touch



Graveyard

Use words from your plan to write a setting description of the graveyard.