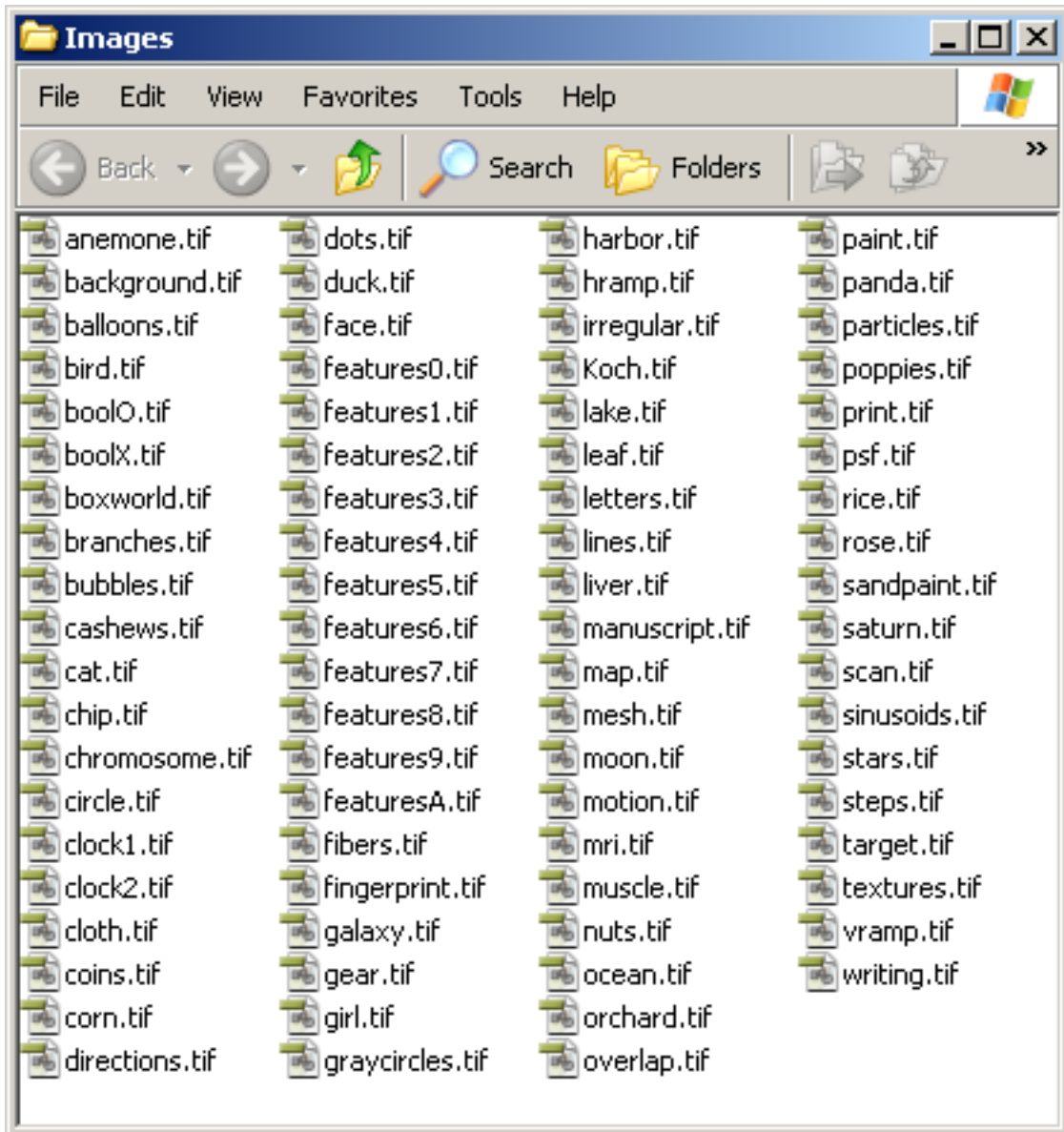


Read Me First

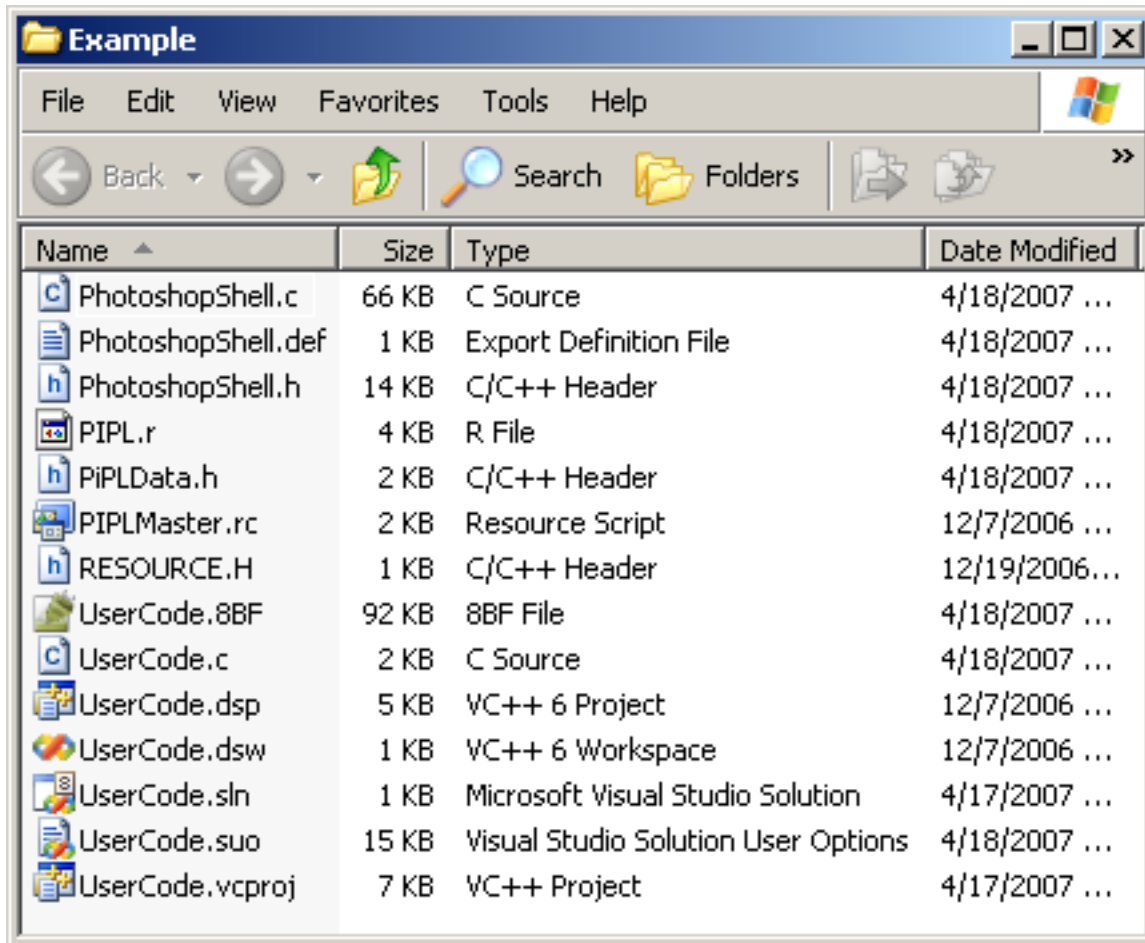
This CD is intended to accompany the textbook "Introduction to Image Processing and Analysis" by John C. Russ and J. Christian Russ (2007, CRC Press, isbn 0-8493-7073-6). It contains the following folders, which are explained in greater detail in the text. All of these materials carry the same copyright as the book.

1. The **Images** folder contains all of the example images used in the text and problems. The files are all in uncompressed *.tif format (tagged image file format). The names of the individual files are the same as those used in the text.



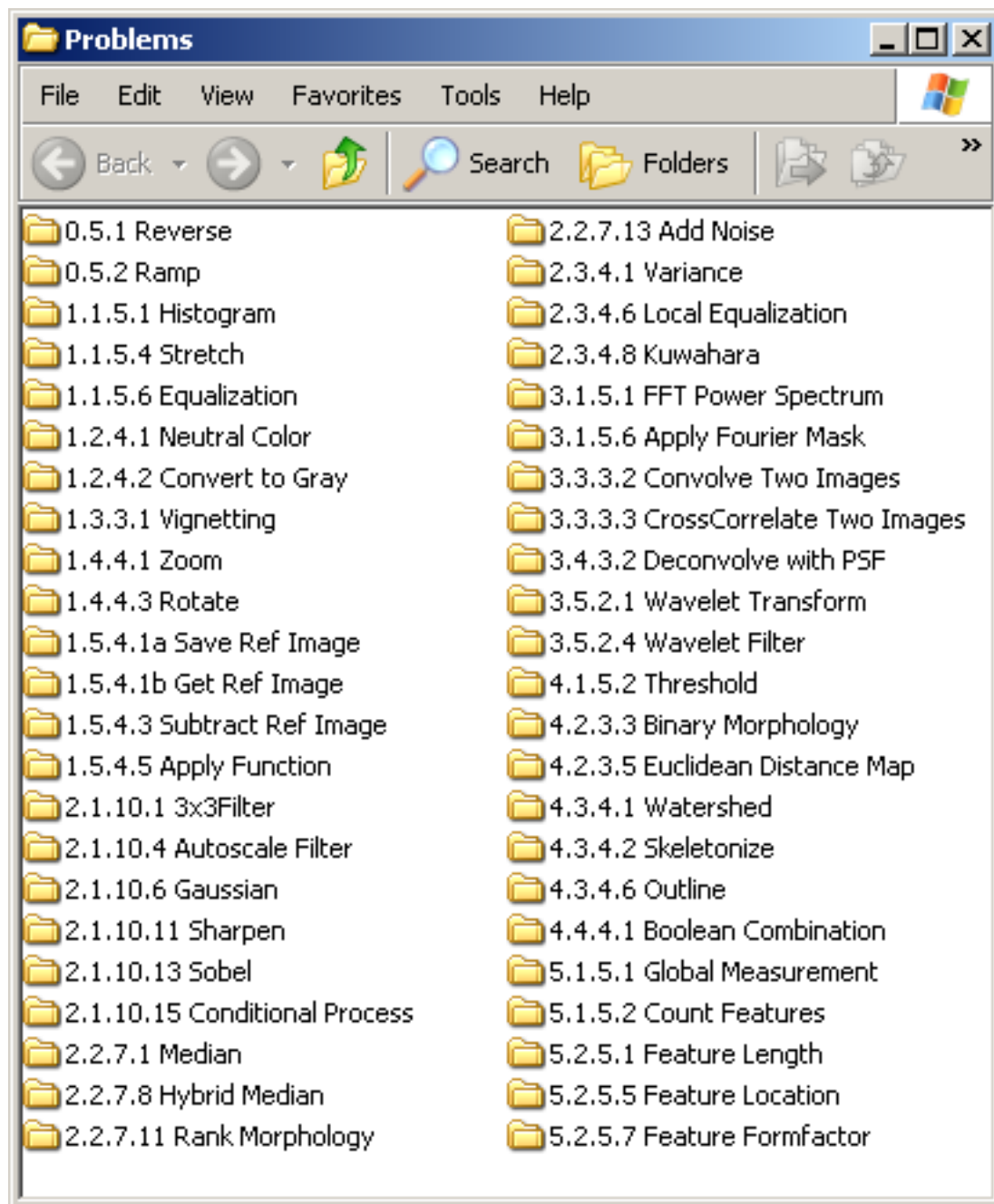
2. The **Example** folder contains a complete project to compile an example plug-in for use with Adobe Photoshop or any compatible program, using Microsoft Visual Studio 2005. The *.c and *.h files can also be used with other compilers if necessary. The contents of the folder are listed below and explained in detail in the Appendix of the textbook. It is intended that the stu-

dent duplicate this folder in its entirety as a starting point, and then modify the **UserCode.c** and **PiPLData.h** files to generate routines that implement the various procedures and problems described in the text.



The resulting plug-in code (the **UserCode.8BF** file) can be used with all versions of Photoshop from 5.0 on (the current version as of this writing is CS3, aka Photoshop 10), and on all recent versions of Windows (although some versions of Photoshop may require Windows 2K, XP or Vista). For readers wishing to compile plug-ins for use on Macintosh computers, please note that the various processors and operating systems used in recent Macintosh computers create a more complicated situation. Appropriate source code examples and information on compilers can be found on the support website www.Intro2Imaging.com.

3. The **Problems** folder contains a set of folders, one corresponding to each of the worked problems (marked with a # symbol) in the text. Each problem folder is numbered to correspond to the problem in the text, and contains a complete set of files for that project. Compilation directions are provided in the text. The folder **Input Files** contains text files that are examples of the input parameters used by the various problem solutions. They are standard text files that correspond to the individual problem solutions, with values that can be modified using Notepad or a similar program. Each file also contains explanation of its contents and identifies the problem(s) for which it is used. Each should be placed at the root of the C: drive for the problem solution to access it.



As noted in the text, Photoshop-compatible plug-ins are recognized by and function properly with a wide variety of programs, ranging from free to professional (i.e., expensive). Photoshop itself is available with lower-cost pricing through most college bookstores and some on-line sellers, for purchasers with academic credentials. In addition, trial versions of the full version of the latest version of Photoshop as well as Photoshop Elements may be downloaded from [<www.adobe.com/downloads/>](http://www.adobe.com/downloads/). The trial versions are fully functional but will run only for a limited period of time (typically one month), after which a valid serial number is required.